



A photograph of a person riding a motorcycle on a long, straight dirt road in a rural, open landscape. The road is reddish-brown and stretches into the distance. The sky is blue with scattered white clouds. There are some sparse green bushes and trees on either side of the road. The overall scene is bright and clear.

Unaenda wapi?

Pictures of Kenyan Roads



**For My Recollection of Kenya Touring
in Winter of 2010,
from 25 DEC 2010 to 02 JAN.**



Unaenda wapi?

Pictures of Kenyan Roads



Hii ni nini?

Kwa nini alifanya hivyo?

27 DEC 2011 (MON)

25 DEC (SAT)

22 : 00 (JST) NRT Departure
EK319 to DXB

26 DEC (SUN)

04:55 (GST) DXB Arrival
10:45 (GST) DXB Departure
EK719 to NBO
14:55 (KST) NBO Arrival

Lodging :

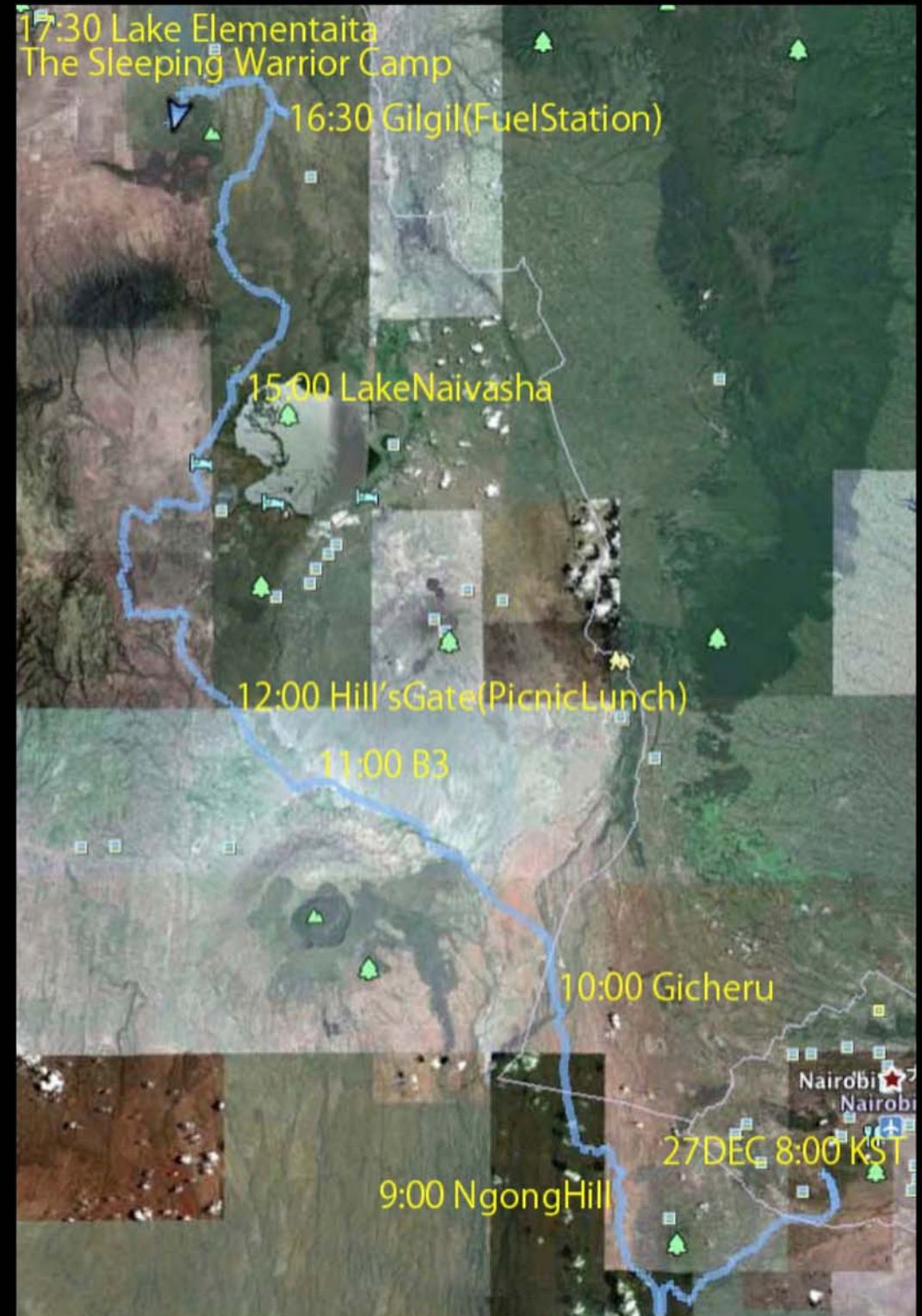
Nairobi Osoita Lodge
Nazarene University Road, Ongata Rongai,
Nairobi (020)-3544609
<http://www.osoitalodge.com/>

27 DEC (MON)

Nairobi to Elementaita
Running Distance : Approx. 220km

Lodging :

The Sleeping Warrior Camp
(0735)-408698 / (0727)-067418
<http://www.sleepingwarriorcamp.com/>



















28 DEC 2010 (TUE)

Elementaita to Mosiro
Running Distance : Approx. 140km

Lodging :
Tent-camp at Mosiro





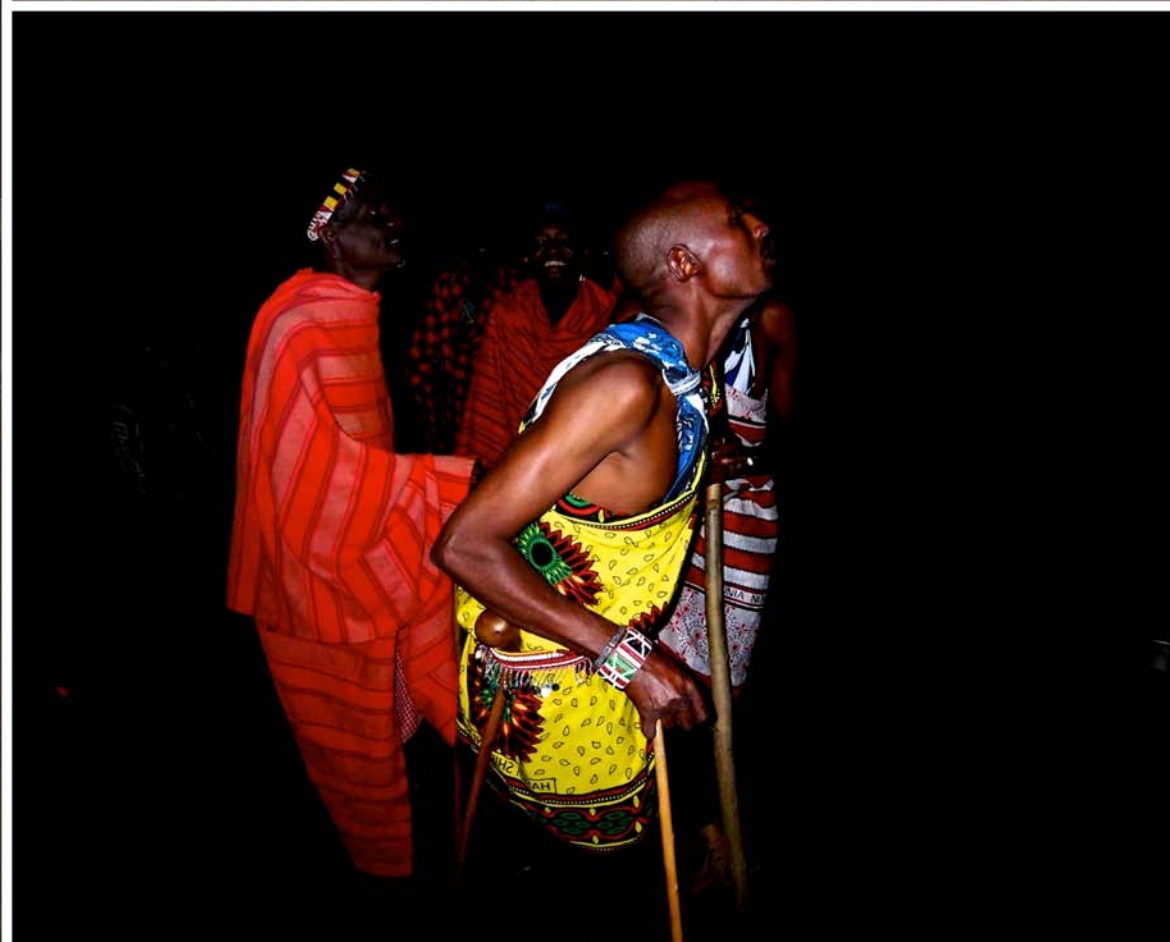
















29 DEC 2010(WED)

Mosiro to Oltepesi

Running Distance :
Approx. 180km

Lodging :
Olorgesailie Prehistoric Site

















30 DEC 2010(THU)

Oltepesi to Amboseli

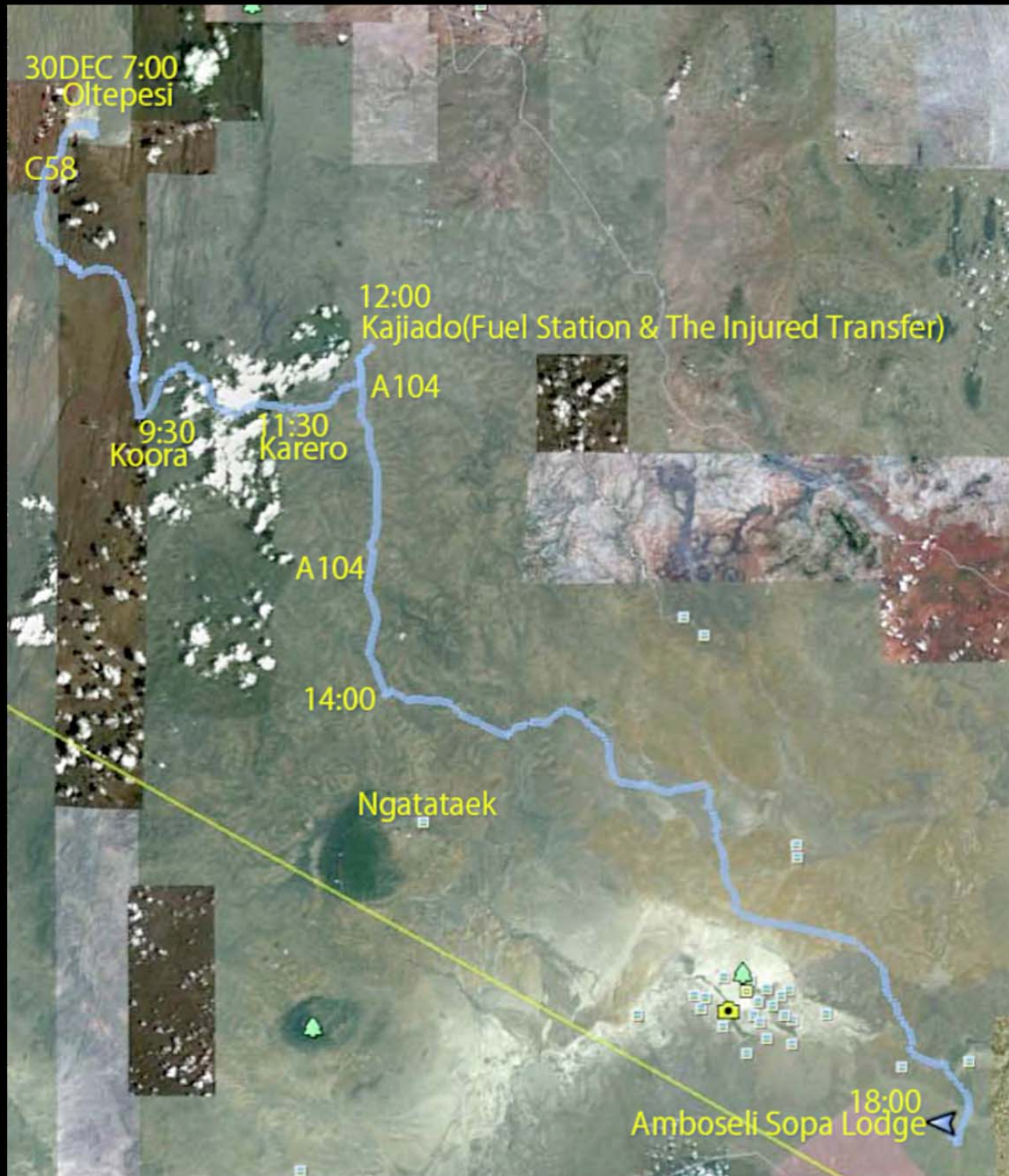
Running Distance : Approx. 280km

Lodging :

Amboseli Sopa Lodge

(045)-622200/(045)-622334

<http://www.sopalodges.com/amboseli/home.html>











USKER
MAKES US EQUAL.
& NO EQUAL.

COCKTAILS

- Stake Special** \$10.00
A special blend of Scotch Whisky, Orange Juice, and a dash of Angostura Bitters.
- Key Lime** \$10.00
The classic drink made with Scotch Whisky, Key Lime Juice, and a dash of Angostura Bitters.
- Manhattan** \$10.00
A classic drink made with Scotch Whisky, Sweet Vermouth, and a dash of Angostura Bitters.
- Brandy Glass** \$10.00
A classic drink made with Brandy, Orange Juice, and a dash of Angostura Bitters.
- Pink Fizz** \$10.00
A classic drink made with Scotch Whisky, Pink Grapefruit Juice, and a dash of Angostura Bitters.
- Whiskey Special** \$10.00
A classic drink made with Scotch Whisky, Orange Juice, and a dash of Angostura Bitters.

COCKTAILS

- Whiskey Surprise** \$10.00
A great drink of Scotch Whisky, Orange Juice, and a dash of Angostura Bitters.
- Chilly Breeze** \$10.00
A classic drink made with Scotch Whisky, Orange Juice, and a dash of Angostura Bitters.
- Three Spirit** \$10.00
A classic drink made with Scotch Whisky, Orange Juice, and a dash of Angostura Bitters.
- Whiskey Breeze** \$10.00
A classic drink made with Scotch Whisky, Orange Juice, and a dash of Angostura Bitters.
- Classic** \$10.00
A classic drink made with Scotch Whisky, Orange Juice, and a dash of Angostura Bitters.



31 DEC 2010(FRI)

Morning Safari Cruise in Amboseli NP

Amboseli to Selenkay

Running Distance : Approx. 150km

Lodging :

Selenkay Safari Camp

(0710)-151455/(0738)-734797

<http://www.selenkaysafaricamp.com/>









Amboseli National Park

























1 JAN 2011 (SAT)

01 JAN(SAT)

Selenkay to Nairobi

Running Distance : Approx. 140km

16:40(KST) NBO Departure

EK720

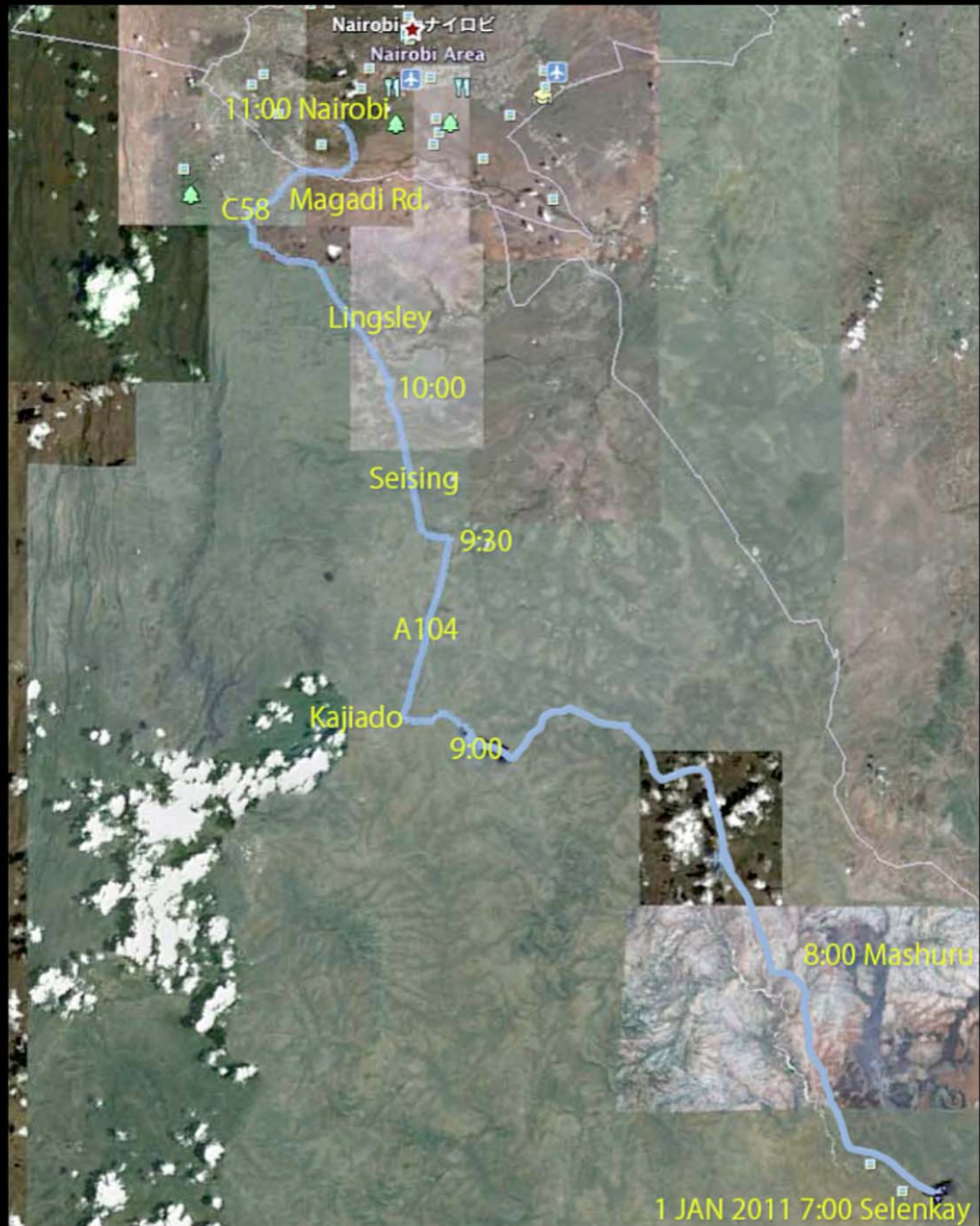
22:40(GST) DXB Arrival

02 JAN(SUN)

02:50(GST) DXB Departure

EK318

17:20(JST) NRT Arrival



















Kenya Touring

25 DEC 2010 - 02 JAN 2011



Uenanda Wapi ?

Special Thanks to

Frédéric POINÇON and his staffs

FREDLINK SAFARIS

Diani Beach - Diani Sea Resort

P.O. Box 85976 - 80100

Mombasa, Kenya

+254 (0) 403 300 064

<http://www.motorbike-safari.com>

fredlink@wanadoo.fr

<http://www.safaris-de-fred.com>

fred@safaris-de-fred.com